

Director of Public Health Report 2017

Bruce Laurence

What is health?



Contents

- 4 Foreword by Dr Bruce Laurence, Director of Public Health**
- 6 Chapter 1 – Active Living**
What does it take to get people in B&NES physically active?
- 10 Chapter 2 – Children’s Mental Health**
The mental health of children and young people
- 14 Chapter 3 – Air Quality**
Tackling air pollution
- 17 Chapter 4 – Domestic Abuse**
Domestic abuse. A curse on our society
- 22 Chapter 5 – Health and Work**
How are health and work related?
- 29 Chapter 6 – A Day in the Life**
A day in the life of a School Nurse
- 30 Public health outcomes framework and other key indicators**
- 31 References**

Can you limit your sitting and sleeping to just 23 ½ hours a day?

The strategy sets out a framework for partnership action under 4 key themes:

Active Lifestyles



More people are participating in physical activities which are fun and sociable and help to build and strengthen communities.

Active Travel



More people are walking or cycling as a means of getting around as part of everyday life.

Active Design

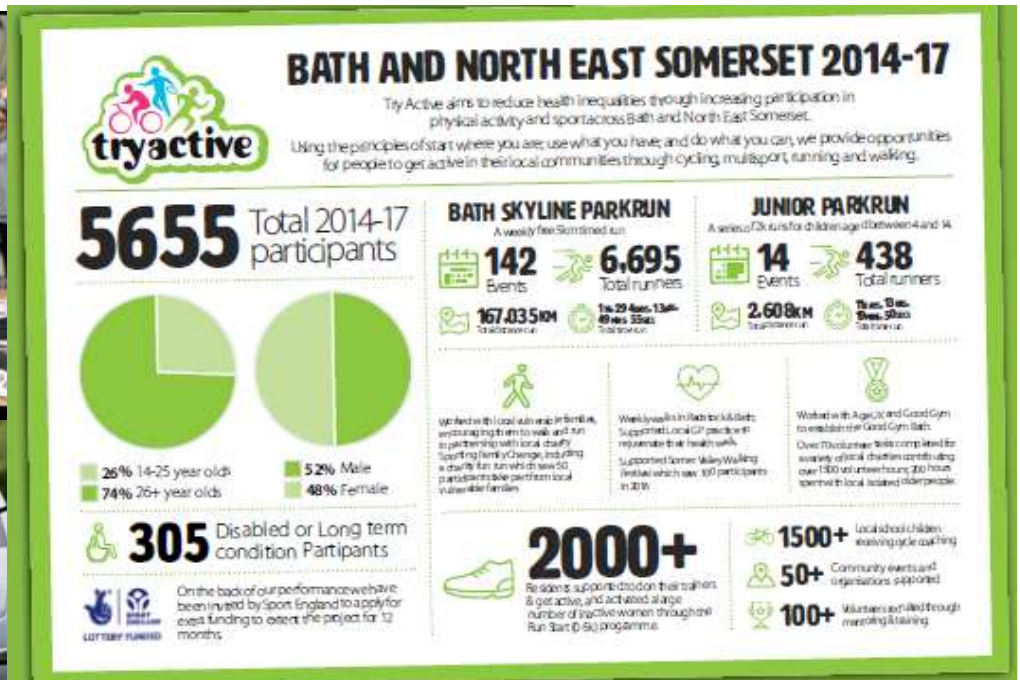


Our neighbourhoods are designed to offer easy access to a choice of opportunities for physical activity enabling communities to be more active and healthy.

Active Environments



Our leisure facilities and green infrastructure are well used and enjoyed by local residents and visitors.



Avon
Wildlife Trust



The mental health of children and young people



- **Infancy: The Best Start in Life**

Early help Board
Health Visiting
Family Nurse Partnership
Parenting strategy

Mindfulness

**Positive Mental Health
Resource Packs**



Tackling air pollution

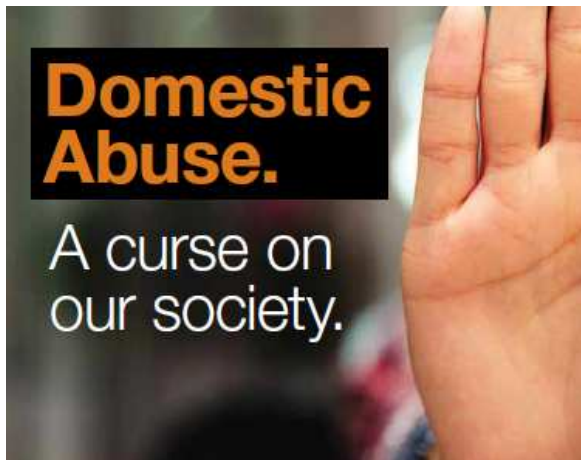


What are we doing locally?

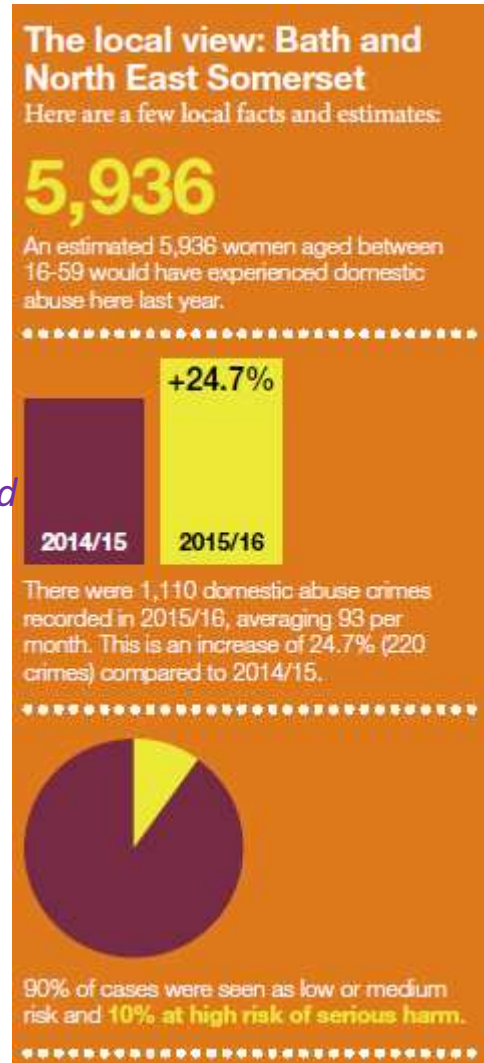
Air Quality Action Plans
Promoting active travel and less reliance on cars

What can I do?

Travel choices
Domestic
Behavioural



I came to you on the advice of my health visitor after the event that ended my relationship, where I had endured 12 years of physical and emotional abuse and bullying from my ex-partner and his family. When I came to you I was mentally exhausted and was about to shut down, I knew I needed to make the final break and get legal help to get an injunction to keep myself and my family safe from harm.



Strategic objectives

1. Community Prevention
2. Early disclosure and help
3. Support for victims
 - Southside
 - Julian house
 - Voices
 - Police - Lighthouse
4. Work with perpetrators
5. Developing the workforce



Health and work



- What is a good job?
- In-work poverty
- Worklessness + poverty
- Workforce and workplace health- physical and mental
- Support to families
- Helping young people
- Building skills
- Staying in work
- Getting back to work



Young people with disabilities account for 7% of the 16 - 24 population and are **16% of the total 'not in education, employment or training' group.**¹⁴



By 2020 it is estimated that **1 in 3** British workers will be **over the age of 50 years.**



£7bn

Estimated costs in lost productivity through unemployment and sickness related to alcohol

A day in the life of a School Nurse

Public health outcomes framework and other key indicators

Public health outcomes framework and other key indicators (as at November 2017)



PHOF Reference/ Source	Period	Indicator Description	England	South West	Bath and North East Somerset
Health Improvement					
2.04	2015	Under 18 conceptions (females 15-17, rate per 1,000)	20.8	16.8	11.4
2.06i	2015-16	Prevalence of overweight (including obese) in 4 to 5 year olds	22.1%	21.9%	22.6%
2.06ii	2015-16	Prevalence of overweight (including obese) in 10 to 11 year olds	34.2%	30.3%	27.9%
2.07i	2015-16	Hosp admissions, unintentional and deliberate injuries 0 - 4 years per 10,000	129.6	135.2	159.0
2.07i	2015-16	Hosp admissions, unintentional and deliberate injuries 0 - 14 years per 10,000	104.2	105.0	119.6
ChiMat	2015-16	Hospital admissions as a result of self-harm (10-24 years old)/100,000	430.5	597.8	487.6
ChiMat	2013/14 -2015/16	Hospital admissions for alcohol-related conditions, under 18s per 100,000	37.4	46.8	53.2
2.13i	2015/16	Proportion of physically active adults	64.9%	68.6%	68.5%
2.14	2016	Smoking prevalence in adults	15.5%	13.0%	13.6%
2.03	2016-17	Smoking status at time of delivery	10.7%	11.3%	7.1%
2.15ii	2016	Successful completion of drug treatment - non opiate users	37.1%	35.3%	23.1%
2.20i	2015/16	Cancer screening coverage within three years - breast cancer	75.5%	78.3%	76.1%
2.22iv	2013-14/2016-17	Take up of the NHS Health Check Programme - health check take up	48.9%	49.0%	50.2%
Health Protection					
3.03x	2015-16	MMH take-up age 5 (2 doses)	88.2%	90.6%	96.1%
3.03xiv	2016-17	Population vaccination coverage flu aged 65 years and over	70.5%	70.9%	71.4%
3.04	2014-16	People presenting with a late stage HIV infection	40.1%	42.9%	52.9%
Healthcare and premature mortality					
4.04i	2014-16	Under 75 mortality rate from cardiovascular diseases (per 100,000)	73.5	63.4	57.0
4.05i	2014-16	Under 75 mortality rate from cancer (per 100,000)	136.8	128.2	122.2
4.06i	2014-16	Under 75 mortality rate from liver disease (per 100,000)	18.3	14.7	17.5
4.10	2014-16	Suicide rate (per 100,000 population)	9.9	10.8	10.0
4.14i	2015-16	Hip fractures in over 65s (per 100,000)	589	598	534

Bath and North East Somerset – *The place to live, work and visit*

My top ten public health problems

- Environmental damage: climate change, pollution, loss of bio-diversity
- Poverty, inequality, lack of opportunity.
- Poor diet + too little knowledge, motivation + opportunity to change
- Inactivity
- An ageing population with unmet needs. Loneliness and isolation
- Shortage of housing that people can afford
- Children's mental health and ACEs
- Tobacco, alcohol and other dangerous drugs
- Reduced social cohesion, mutual intolerance and hardening politics.
- Deteriorating public sector and services.
- **What are yours...?**